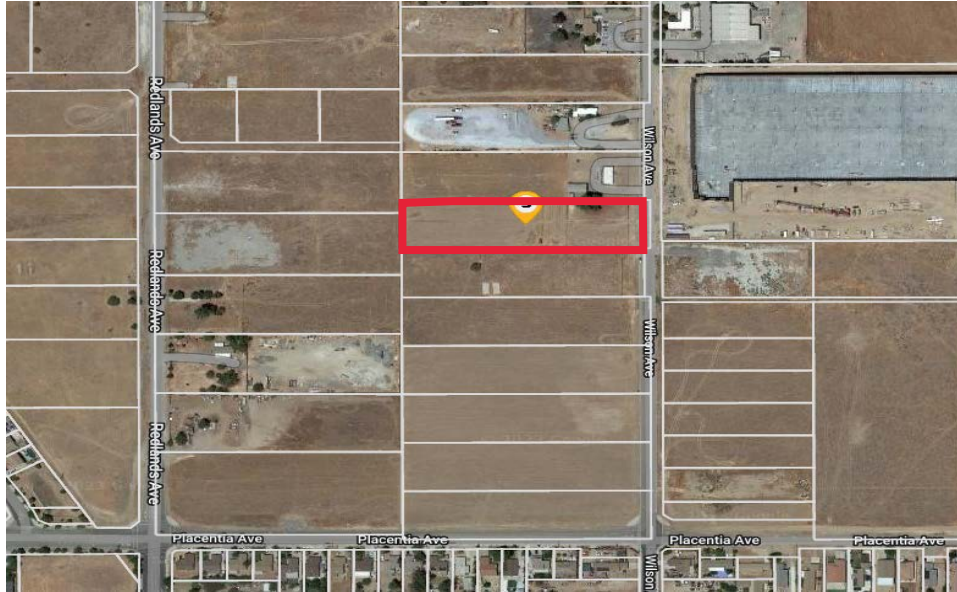




# LAND FOR LEASE

WILSON AVE AND W PLACENTIA AVE, PERRIS, CA  
APN 300-210-016



## PROPERTY HIGHLIGHTS

Parcel was acquired by Riverside County Transportation Commission (RCTC) for the Mid County Parkway Project.

Lot size: 108,464 sf / 2.49 ac

90-Day Temporary Use Lease available

*Ideal for a Christmas Tree Farm*

Up to 108,464 sf / 2.49 ac for lease

FOR MORE INFORMATION, PLEASE VISIT <https://www.rctc.org/doing-business/property/> or  
Contact Paul Mim Mack, Senior Management Analyst-Right of Way

Phone 951.787.7141

Email [row@rctc.org](mailto:row@rctc.org)